

1857

# TRIANGLE C OF E PRIMARY SCHOOL

## PROSPECTUS 2021



**‘Learning, Excellence, Respect.’**

---

Bishop of Leeds: Hollin House,  
Weetwood Avenue, Leeds LS16 5NG  
Tel: 0113 2742395  
[www.westyorkshiredales.anglican.org](http://www.westyorkshiredales.anglican.org)

Dear Parent,

As the Diocesan Bishop of Leeds I am delighted to welcome your child to this church school, within the Diocese of West Yorkshire and the Dales.

Education is at the heart of the church's mission and I am confident that at this church school your child will enjoy a high quality education within a distinctive Christian context. Our schools reflect the inclusive nature of the love of God by reflecting and celebrating the diversity of the communities within which they are located and establishing values and behaviours rooted in faith.

I am proud of the church's historic commitment to provide schools for local families within local communities. The distinctive and inclusive ethos of this school will create a firm foundation which will prepare your child both educationally and personally for their journey into adult life.

I share my interest in, and commitment to, the life of this church school with your local Area Bishop whom I am sure will become a familiar face to you and your child within the school community.

Please be assured of my prayers for you and your child at this exciting time of your family's life. May God bless you and your family.



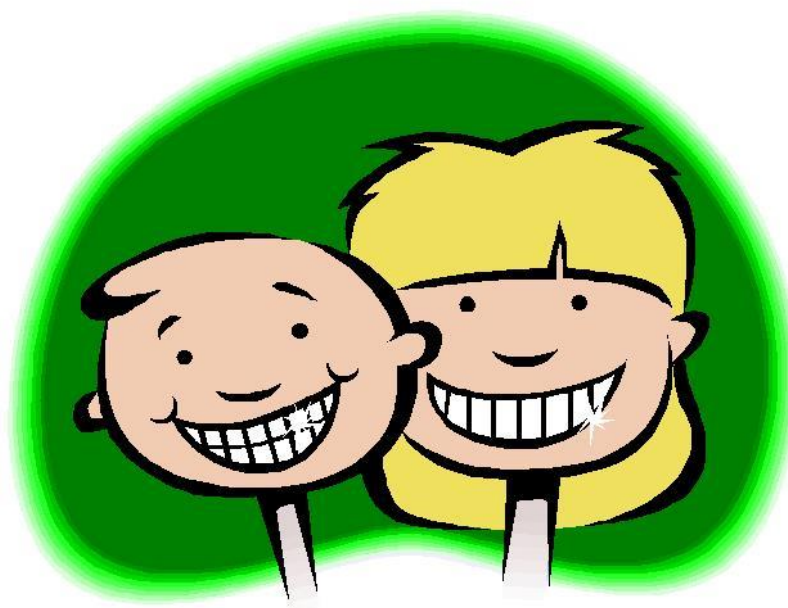
The Rt Revd Nicholas Baines  
Bishop of Leeds

# OUR SCHOOL MISSION STATEMENT

*“Learning, Excellence, Respect.”*

- *Triangle School aims to provide each child with a challenging, stimulating and enjoyable education.*
- *We will strive to develop the whole child through the encouragement of high expectations, in an environment where every child can reach for their potential and grow in independence.*
- *We will nurture attitudes of care and consideration in keeping with our Christian ethos.*

*“Wisdom puts light in the eyes and gives gentleness to words and manners.”  
Ecclesiastes 8.*



## **GENERAL INFORMATION RELATING TO THE SCHOOL**

Triangle CE (VC) Primary School is a co-educational Church of England, Voluntary Controlled Primary school for day pupils. The address of the school is:

Butterworth Lane, Triangle, Sowerby Bridge, HX6 3NJ.

The school telephone number is: 01422 831558.

The school e-mail address is: [admin@triangle.calderdale.sch.uk](mailto:admin@triangle.calderdale.sch.uk)

The school website address is: [www.triangleprimary.org.uk](http://www.triangleprimary.org.uk)

All enquiries should be addressed to Mr G Davies, Headteacher.

## **LIST OF SCHOOL PERSONNEL**

Headteacher		Mr Gavin Davies
Deputy Head		Mr Joseph Allen
Reception	Reception	Mrs Catherine Quirolo
Class 1	Y1	Miss Kylie Mills
Class 2	Y2	Miss Gemma Steele
Class 3	Y3	Miss Dannielle Westney/Miss Jasmine Todd
Class 4	Y4	Mrs Grace Forrester & Miss Jo Radcliffe
Class 5	Y5	Mrs Jess Barlow
Class 6	Y6	Mr Joseph Allen
PPA Teacher		Mr Simon Barnes
School Business Manager		Mrs Viv Hawkesworth
Administrator		Miss Sally Stafford
Learning Support Assistants		Mrs Vanessa Cameron
		Miss Shaunna Carlton
		Mrs Gillian Hill
		Mrs Karen Robinson
		Mrs Caroline Sykes
		Mrs Sarah Szadbey
		Ms Bronte Dines-Allen
		Mrs Jo Price
		Mrs Jodie Moorhouse
		Mr Paul Owen
Caretaker		Miss Lisa Brown
Cleaner		Miss Jade Day

## **THE GOVERNING BODY**

Mr A Evans	Local Authority	Chair of Governors
Mr G Davies	Headteacher	
Mr T Gilligan	Co-opted	
Mr R Thornber	Co-opted	
Mr I Slim	Foundation	
Mr M Fisher	Parent	
Mrs E Foley	Parent	
Mrs J Barlow	Staff	
Helen Kay	Clerk to Governors	

## **NUMBER OF PUPILS ON ROLL**

The number of children on roll in each year group as in September 2020 was:

<u>Age Group</u>	<u>Number of Children</u>
Reception	22
Y1	30
Y2	29
Y3	30
Y4	31
Y5	29
Y6	29
TOTAL	200

## **ORGANISATION OF THE TYPICAL SCHOOL DAY**

<u>KS1</u>		<u>KS2</u>	
8.45	Doors Open	8.45	Doors Open
8.45 – 8.55	Early Task	8.45 – 8.55	Early Task
8.55 - 9.05	Registration	8.55 - 9.05	Registration & Early Task
9.05 - 9.30	Worship	9.05 – 9.30	Worship
9.30 - 10.30	Session 1	9.30 – 10.30	Session 1
10.15 - 10.30	Break	10.35 – 10.50	Break
10.45 – 12.00	Session 2	10.45 – 12.10	Session 2
12.00 - 1.00	Lunch	12.10 – 1.00	Lunch
1.00 - 1.05	Registration	1.00 – 1.05	Registration
1.05 – 2.00	Session 3	1.05 – 3.15	Sessions 3 & 4
2.00 - 2.15	Break		
2.15 – 3.15	Session 4		

## **HISTORY OF SCHOOL BUILDING AND GROUNDS**

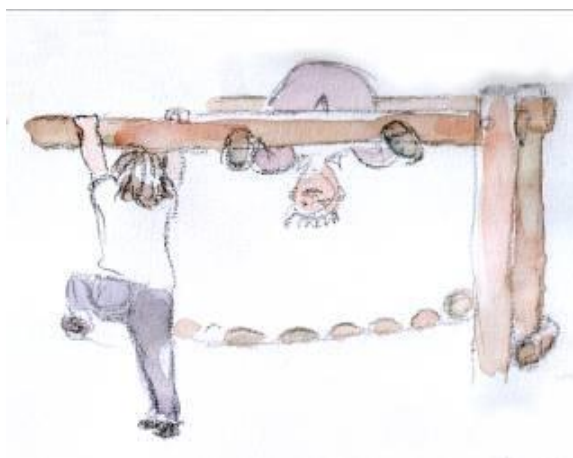
The original two class school was built in 1857, with extensions in 1899, notably the hall and two extra classrooms. In 1977 the Head's house was incorporated into the school, thereby contributing extra accommodation, in the form of Head's office, storeroom, caretaker's stores and staff room. New toilet and cloakroom areas for both Infant and Junior children were completed in 1981. The school was extended with the addition of a fifth classroom and a PE store.

A major extension and remodelling programme was completed in 2010. This provided four new classrooms, a defined entrance area and numerous other rooms. The 'old' school was remodelled and renovated. There is a car park for staff and visitors on the field.

The school is surrounded by a tarmac yard, garden and play area. There are playing fields to the rear of the school, including a newly installed running track.

In 2015 a seventh classroom was added as an extension of the first floor, giving the school the capacity to teach in single year groups.

## **ARRANGEMENTS MADE FOR PARENTS/CARERS WISHING TO VISIT THE**



## **SCHOOL**

Parents/Carers are encouraged to visit the school and are shown the school, its facilities and equipment, and examples of children's work. An Open Day is arranged (usually in November), for Parents/Carers to look around the school. Aims and objectives are discussed, and a further visit may be arranged to allow the child and Parents/Carers to meet the teachers and see the children at work.

Parents/Carers are encouraged to stay in school to gauge its atmosphere, look at lessons and see the interaction between children and adults. They are most welcome to attend the Friday morning assembly and are always invited to social occasions where Parents/Carers and children can meet teachers and the other children in an informal situation. Parents Evenings are usually held in the Autumn and Spring terms. During these, Parents/Carers will be offered the opportunity to discuss the progress of their child in private interviews with the class teacher.

Parents/Carers are encouraged to participate fully in the activities of the school, and are able to gain access to curriculum materials and schemes of work. They are also welcome to meet other Parents/Carers in school and participate in the activities of the Parent, Teacher and Friends Association.



## **INFORMATION RELATING TO CURRICULUM AND CLASS ORGANISATION**

The school has traditionally set high standards of achievement and behaviour. Its curriculum is concerned with the intellectual, physical, social, emotional, and spiritual development of the child. Its main aim is to provide a caring, Christian environment in which children will learn to succeed. In addition the school aims:

- To provide a rich, broad and balanced curriculum.
- To help all children learn that good manners and consideration for others are valued qualities in our school community and the world outside.
- To help children follow Christian values and be aware of other races, religions and ways of life.
- To work in partnership with home in order to support, sustain and extend the education of our children.
- To provide a safe, secure and stimulating environment.
- To ensure all children have equal access to all areas of school life.
- To foster within our children, a responsibility for our local community and develop an awareness of themselves as citizens of the wider world.
- To provide support and guidance for all members of the school family.
- To enjoy life at Triangle School.

The school's curriculum is broadly based to enable skills acquired in one activity to be used for learning in another. It is organised so each child can succeed in literacy, numeracy and other essential skills.

The school's language policy is concerned with helping pupils gain knowledge, understanding, pleasure and discrimination through a wide variety of language media. The development of literacy skills is encouraged from the earliest age. Parents/Carers are asked to share in the enjoyment and pleasure of books and in helping them to learn new words which will be given regularly in order to develop their skills. Throughout the school Parents/Carers are asked to listen to their children read on a daily basis, and as their skill increases to question them about the text and the meaning of words and phrases. An outline of how Parents/Carers can help their children learn to read is given in the Early Years Brochure. The school also encourages children to use the written and spoken word to report, describe, imagine, project and reason. Accuracy in spelling, punctuation, sentence structure and grammar are highly valued.



In mathematics the school offers a wide curriculum which aims to have a beneficial effect both in improving children's attitudes to mathematics and in laying the foundations of better understanding.

The mathematics curriculum is designed to provide the children with a means of exploring their environment and developing their powers of logical thought, in addition to equipping them with the numerical skills for later work and study.

Project work forms an important element in the school's curriculum and includes; science, music, computer studies, physical education, art and design technology.

As a Voluntary Controlled Church of England School, RE teaching is supplemented by assemblies taken by a member of the clergy.

### **ORGANISATION OF EDUCATION WITHIN THE SCHOOL**

The school is organised into seven classes with each class containing a single year group. Classes are of mixed ability.

Parents/Carers and friends of the school with specific skills and abilities are welcome to contribute to the work of the school and its extra curricular programme.





## **PASTORAL, SOCIAL AND WELFARE NEEDS OF PUPILS**

As a small school the pastoral system is integrated with classroom teaching duties, although the Headteacher has overall responsibility for each child's welfare.

In case of illness a close member of the family is contacted. We do ask working Parents/Carers to let us know, when a child is admitted to school, where a parent figure can be contacted, and this information is reviewed regularly. In cases of accident in school, arrangements are made for pupils to receive emergency treatment and Parents/Carers are informed as soon as possible.

If a child has to attend a clinic, dental appointment or hospital, during school time, it is essential that the child is met at school to be taken there rather than go home to meet the parent.

## **MEDICINE IN SCHOOL**

Medicines are not given, routinely, in school. However, if your child requires prescribed medication, you are most welcome to come into school to give it to him/her. Special arrangements can be made in the case of children on long term medication, or for medications that need to be given three or more times a day. You will need to discuss your needs with the Headteacher.

### **Asthma**

The treatment of asthma is considered separately, as it is on-going medication. All children who require inhalers must have a spare to be kept by their class teacher in school, with written instructions as per the child's Asthma Care Plan.



## **SCHOOL DISCIPLINE**

The school and parents are jointly responsible for developing appropriate behaviour and a positive attitude to learning.

Whilst emphasising positive encouragement to maintain a good standard of behaviour, the Governors recognise the importance of having a clear set of rules and a list of sanctions should these be broken. Triangle is a happy school and good behaviour is encouraged and maintained through good inter-personal relationships, based on knowledge and understanding of individual children and their needs. A copy of the Behaviour Guidelines is issued to all Parents/Carers on their child's entry to the school and a copy of the school's Behaviour Policy is available on request.

## **INFANT SCHOOL UNIFORM**

This consists of a grey skirt or trousers. These should be worn with a white polo shirt and a green sweatshirt, cardigan or jumper. Children in Reception Class do not wear ties.

## **JUNIOR SCHOOL UNIFORM**

This consists of a grey skirt or trousers. These may be worn with any combination of the following:

- White shirt with green/gold striped tie;
- White blouse;
- White polo shirt;
- Green sweatshirt, cardigan or jumper.

Sensible black shoes must be worn at all times. Trainers are not allowed.

## **ALL PUPILS**

All pupils must wear a yellow t-shirt and black shorts for PE and games along with a pair of plimsolls. Junior children should also have a rugby shirt, embroidered with the school logo for outdoor PE.

No jewellery should be worn, but children with pierced ears may wear one pair of small stud earrings which they will need to remove for PE lessons.

The following items of uniform are available from the school:

- Green sweatshirts \*, cardigans \* and jumpers \*;
- White polo shirts \*;
- Reversible waterproof fleece coats \*;
- School ties;
- PE shorts
- PE blouse and vests;
- Rugby Shirts\*
- Book bags \*.

Items marked with an \* are embroidered with the school logo.

**All items of clothing must be clearly marked with the pupil's name.**



## **ACTIVITIES OPEN TO PUPILS AT THE SCHOOL**

Children are encouraged to become involved in a variety of activities organised voluntarily by members of staff, Parents/Carers, the PTFA and local church groups.

A range of clubs are open to pupils in Key Stages 1 and 2 (dependent on activity) regardless of their ability or gender. It is our wish that these activities should promote enjoyment and give everyone an opportunity to take part.

Arrangements for instrumental tuition are made for pupils with Calderdale Music Service. A charge is made for these lessons.

## **SPORTING AIMS AND PROVISION FOR SPORT**

The following aspects of Physical Education are taught at the school:

- Gymnastics;
- Dance;
- Swimming;
- Athletics;
- Minor games and small team versions of national major games.

Our PE scheme is based on the child as an individual and upon the needs, developing physique, physical ability and personality of each child.

We aim to assist each child to attain the maximum progress possible by developing fully the varying physical resources of our pupils so that they can be used effectively within each aspect of PE, as set out in the National Curriculum. We wish our pupils to experience enjoyment and a sense of achievement each time they take part in physical activity.

The school has the benefit of a large playing field, a school hall with a PE store and a school yard.



The school organises its own annual sports day. All pupils are involved.

The school participates in inter-school sports and competitions arranged by the Sowerby Bridge Schools' Sports Association. In recent years these have included:

- Five-a-side football tournament and friendly fixtures with other schools;
- Annual netball tournament and friendly fixtures with other schools;
- Rounders tournament;
- Cross country races;
- Local schools' swimming gala;
- Local schools' athletic competition.

Participation in these and similar extra curricular activities is at the discretion of the Headteacher.

The school has a 'house' system that involves all children from Reception to Year 6. Events are arranged, both sporting and non-sporting, throughout the year. House points are awarded as part of our reward system and a trophy is awarded each term to the winning team.

### **SCHOOL COUNCIL**

The school has a School Council. The main body of the School Council is formed by four Year 6 children who are voted into office by the whole school. They are assisted by two class representatives from each class. This Council gives the children a voice and issues raised by them are carefully considered by the staff.

### **SPECIAL EDUCATIONAL NEEDS AND DISABILITY (SEND) ARRANGEMENTS**

Should a teacher or parent have some concern over a child's development or progress the child may, following school based assessment, be put on the SEND Register. Following discussion with the Inclusion Manager, the Parents/Carers, and the class teacher, an individual learning programme will be developed to support the child's individual need. Termly meetings will be held to discuss the child's progress. Should further support be required the school has access to a wide range of professional expertise. We believe it to be important that children with special needs should be able to learn in the normal classroom situation. A copy of the school's SEND Policy is available on request.

As a fully inclusive school, we ensure that no pupil, including those with SEN or disabilities is treated less favourably than other pupils. The building has been made fully accessible to all during the recent modernisation works. The school also has an Accessibility Plan in which it highlights future steps to ensure and increase the current levels of accessibility.



## **PUPILS' PROGRESS AND ATTAINMENT**

The progress of all pupils is continually monitored. Reception children are assessed using the Foundation Stage Profile during their first term of entry. In the Summer Term progress is measured using teacher assessments. Statutory assessment of pupils occurs in Year 2 (7 year olds) and in Year 6 (11 year olds). There is also a phonics screening test carried out in Year 1. Records of children's progress are kept in school. Information evenings are held to inform Parents/Carers about curriculum and assessment procedures.

Parents/Carers are invited to a Parent/Teacher Consultation Evening during the Autumn and Spring terms and in the Summer Term Parents/Carers may arrange an appointment with their child's class teacher to discuss their child's report. The results of the tests outlined above, coupled with teacher assessment of the year's work, are put together to form a written end-of-year report.

Apart from the formal arrangements outlined above Parents/Carers are welcome to make an appointment at school to discuss any aspect of their child's educational progress or social development with the class teacher.

## **RELIGIOUS EDUCATION**

Classes follow the locally agreed syllabus, 'Believing and Belonging' for Religious Education. R.E. is delivered weekly, which follows our long term planning. Children are taught about Christianity and other World Faiths in a sympathetic and enjoyable way.

The school makes arrangements to enable Parents/Carers wishing to exercise their right of withdrawal from R.E. and worship, under Section 25 of the 1944 Education Act.

## **RSHE**

It is practice in the school to satisfy pupils' curiosity about reproduction in a simple and straightforward way appropriate to the pupils' age and understanding.

After careful consideration the Governors of the school have decided that the school should offer a programme of sex education to Year 6 children. This will be matched to the pupils' age and experience and will be presented within a moral family oriented and Christian framework.

Parents/Carers are informed when lessons are due and are welcome to come in and discuss the content of the lessons with the teacher involved.

## **HOMEWORK**

The school recognises the importance of Parents/Carers and teachers working together in partnership to support and enhance the children's learning opportunities. An information leaflet about homework is included in the school's Welcome Pack.



## DETAILS OF TIME SET ASIDE FOR TEACHING DURING EACH SCHOOL DAY

Infants: 4 hours 25 minutes

Juniors: 4 hours 45 minutes



## **CURRICULUM STATEMENT**

The School Governors have adopted the general principles of the Calderdale Local Authority's Curriculum Statement but reserve the right to adapt these to meet the school's particular requirements.

The Curriculum of the school comprises a basic curriculum which includes Religious Education for all pupils, and the National Curriculum. The National Curriculum consists of Core and Non-Core subjects. These are:-

Core : English, Mathematics, Science and Computing

Non-Core : Design Technology, History, Geography, Music, Art, Physical Education, Modern Foreign Languages and Religious Education.

Computing is taught throughout the school, but it also enriches the other curricular subjects. Some 'non-core' subjects are combined and taught through cross-curricular topics.

Thus the basic curriculum is set in a structured framework.

In addition to this basic curriculum the school's curriculum offers Personal, Social, Health Education and Multi-cultural Education.

This curriculum applies to all pupils in the school.

Our starting point is the need for recognition of the individuality of children. Consideration is then given to the nature of children's learning and the factors which influence it.

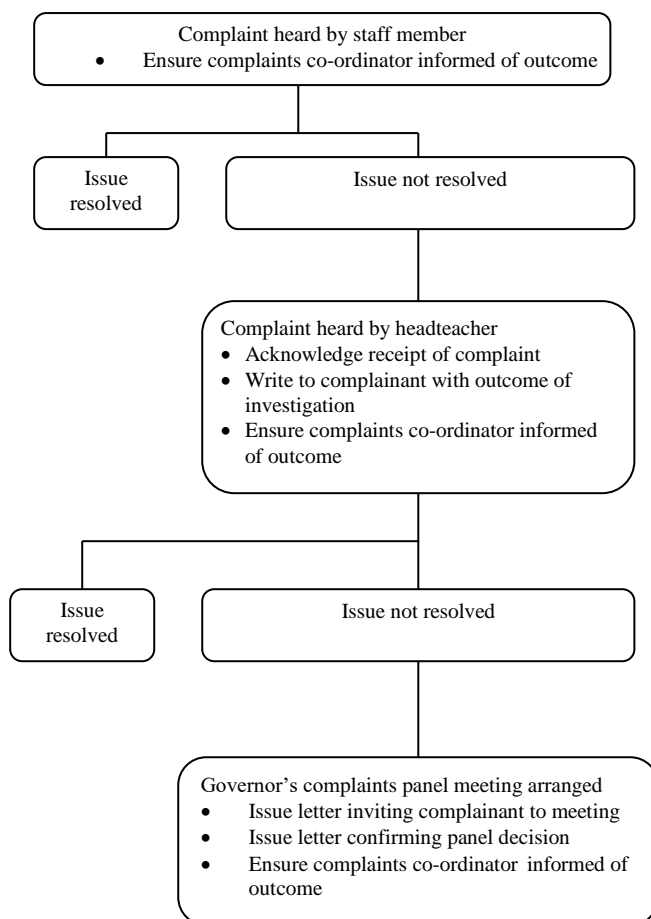
The teaching staff utilise a range of strategies to match the abilities and experience of pupils. Their task is not only to convey a body of knowledge but also to foster the development of concepts, skills and attitudes needed to promote an effective education.



## COMPLAINTS PROCEDURE

If problems occur the matter should first be discussed with the class teacher and subsequently with the Headteacher. If concerns remain, a letter outlining the issue should be sent to the Chair of Governors. The Local Authority has established a complaints procedure concerning the **curricular** responsibilities of the Local Authority and/or the Governing Body of the school. The areas covered by the complaints procedure include matters relating to the implementation and delivery of the National Curriculum. The Local Authority does **not** have the authority to investigate any other complaints.

Where a parent has a complaint about the curriculum which is covered by the complaints procedure, he or she should discuss the matter with the Headteacher. If the matter is not resolved, the parent should notify the Group Director of Children and Young People's Services, Westgate House, Westgate, Halifax, in writing, giving details of the complaint. The procedures then provide for the complaint to be considered formally by the school governors and/or the Local Authority, as appropriate.



Copies of the complaints procedure can be obtained from any school maintained by the Calderdale Authority, the central and area offices of the Council and all public libraries in Calderdale.

All other complaints should be directed to the school. Governing Bodies have a legal responsibility to investigate all such complaints.



## **DOCUMENTS FOR INSPECTION**

The documents indicated below are available for inspection. Any person wishing to inspect one or more of the documents is asked to contact the Headteacher who will arrange a mutually convenient date and time when the required documents will be made available at the school. It is regretted that the documents may not be taken off the school premises. Some of the documents can be made available to you if you so wish but a charge may be made to cover the costs of reproduction.

The documents available for inspection are: -

Statutory instruments, circulars and administration memoranda issued by the Department for Education concerning the curriculum.

Policies and schemes of work.

The Local Authority's complaints procedures.

The agreed syllabus for Religious Education adopted by the Authority and which applies in this school (Calderdale's Agreed Syllabus).

That part of the school's trust deeds governing Religious Education and a written statement produced by the Governing Body about the arrangements which have been made for Religious Education.

## **CHARGES AND REMISSIONS**

The school follows the Local Authority's policy on charges and remissions. Copies of this policy are available on request. A charge may be made to cover the costs of reproduction.

## **BEFORE AND AFTER SCHOOL CLUB**

The school hosts a Before and After School Club and holiday club. At the present time the hours offered are 7.30am to 8.55am and 3.15pm to 6.00pm. For further details of availability and charges please contact 3 Corners – 01422 835658 or [Threecorners3@hotmail.co.uk](mailto:Threecorners3@hotmail.co.uk)

## **ORGANISATIONS HAVING LINKS WITH THE SCHOOL**

The PTFA of Triangle School is a flourishing organisation which provides valuable support to the work of the school. It helps with fund raising, work within school, and the organisation of concerts, Open Days etc. Parents/Carers of children at the school automatically receive information from the PTFA via the school.

Though some distance away, we have good links with St Peter's Church, Sowerby. We use the church as an additional resource when teaching aspects of RE.

## **MEALS AT SCHOOL**

We have been cooking fresh, nutritious school meals on site since November 2018. The service is managed by Kirklees Catering Services.

From September 2014 every infant child became eligible for a Universal School Meal and we encourage all pupils to take up this offer.

Provision is also made for children who want to bring sandwiches at lunchtime.

## **ALLERGIES IN SCHOOL**

We have individuals in school who have severe allergies, because of this we are having to insist that nothing containing nuts or strawberries is brought into school. This includes items that are flavoured with these ingredients, such as strawberry yoghurts. We will confiscate and dispose of any items found in school that contain either nuts or strawberries as we need to be vigilant and keep the school nut and strawberry free.



# CALDERDALE PRIMARY ADMISSIONS POLICY

## PRIORITY FOR ADMISSION

For a community or voluntary controlled school the order of priority for admission is:

- 1<sup>st</sup> Priority Category:
- a. Pupils who are in receipt of a Statement of Special Educational Needs (in accordance with the 1996 Education Act) where the Authority has named a particular school as necessary to meet the pupil's needs.
  - b. Pupils who are in public care ('Looked After' children).

- 2<sup>nd</sup> Priority Category
- Pupils who have a brother or sister (or step/half brothers and sisters) living in the same household, attending the school or its associated junior school at the time of admission.

Parents/Carers should be aware that a sibling link cannot be claimed where a sibling in receipt of a Statement of Special Educational Needs is attending in a resourced unit within a mainstream primary school.

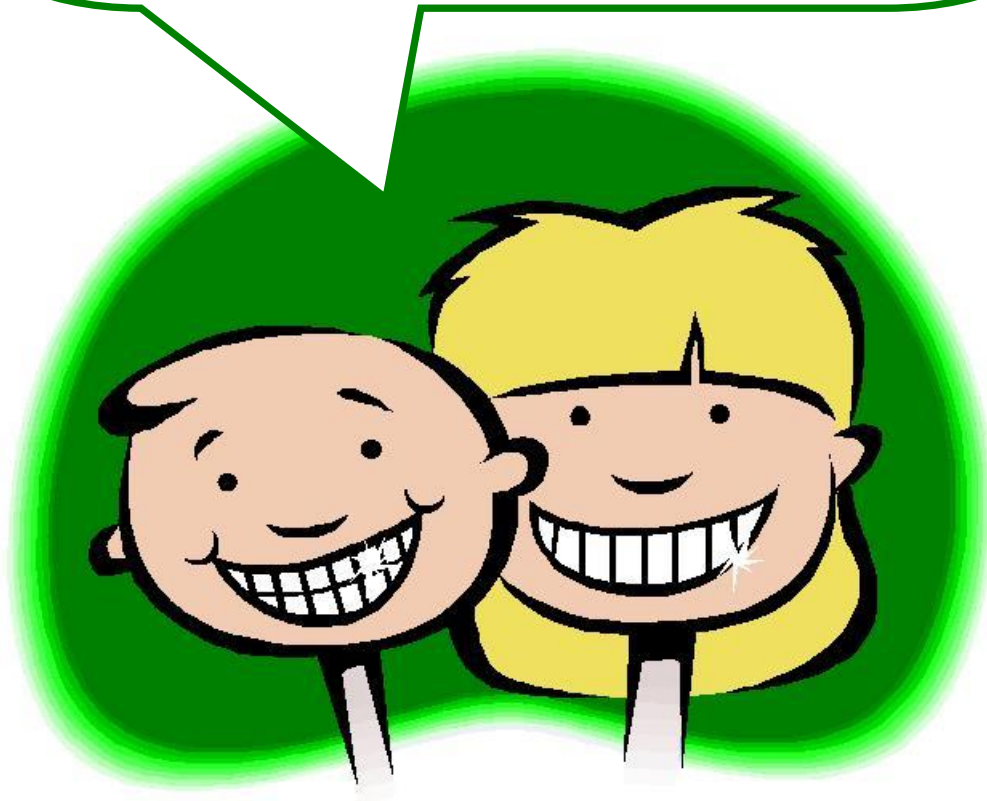
- 3<sup>rd</sup> Priority Category
- Other children.

## NOTE

- i. If there is over-subscription within any category, then pupils will be admitted in the order of proximity of the pupil's home to school. Proximity will be determined by the shortest safe walking route from the front door of the dwelling to the main entrance of the school using lit and metalled roads where these exist.
- ii. There are no defined priority (catchment) areas for community and voluntary controlled primary schools.
- iii. In voluntary controlled schools, no account is taken of church membership or affiliation.

Thank you for taking the time to read this brochure. We hope you found it informative.

If you have any questions, or you would like to make an appointment to come and look round, please don't hesitate to contact the school.



**'Learning, Excellence, Respect.'**